

OUR SPECIALTY  
**WORK  
BENCHES**  
FOR ALL!

sjobergs.se

# scandi 1825

| SPECIFICATIONS                       | inches              | mm    |
|--------------------------------------|---------------------|-------|
| <b>SJÖBERGS SCANDI 1825</b> Nr 33279 |                     |       |
| Length of worktop                    | 70 <sup>3/32</sup>  | 1730  |
| Total length                         | 73 <sup>5/32</sup>  | 1858  |
| Width of worktop                     | 22 <sup>13/16</sup> | 580   |
| Total width                          | 27 <sup>15/16</sup> | 710   |
| Thickness of worktop                 | 1 <sup>1/2</sup>    | 38    |
| Thickness of skirt                   | 4 <sup>5/16</sup>   | 110   |
| Vise capacity                        | 4 <sup>1/2</sup>    | 115   |
| Working height                       | 35 <sup>7/16</sup>  | 900   |
| Weight                               | 138 lbs             | 63 kg |

|                               |                     |       |
|-------------------------------|---------------------|-------|
| <b>CUPBOARD SM03</b> Nr 33457 |                     |       |
| Width                         | 40 <sup>15/16</sup> | 1040  |
| Height                        | 16 <sup>1/8</sup>   | 410   |
| Weight                        | 55 lbs              | 25 kg |

|                               |                     |       |
|-------------------------------|---------------------|-------|
| <b>CUPBOARD SM07</b> Nr 33273 |                     |       |
| Width                         | 40 <sup>15/16</sup> | 1040  |
| Height                        | 16 <sup>1/8</sup>   | 410   |
| Weight                        | 48 lbs              | 21 kg |

SJÖBERGS SCANDI 1825+SM03

Nr 35009



## SJÖBERGS SCANDI 1825 – THE PERFECT BENCH FOR THE DISCERNING WOODWORKER!

The top, made of beech, has two double rows of bench dog holes working from each vise. You can use the holdfast in all the dog holes on the top and in the trestle.

All the SJÖBERGS accessories make this bench very flexible.

Package size SCANDI 1825, 1930x750x170 mm

Package size SM03, 1055x500x100 mm

Package size SM07, 1070x510x95 mm

SJÖBERGS SCANDI 1825+SM07



Nr 35010

SJÖBERGS SCANDI 1825



Nr 33279

EAN 7316703279180

SM03



Nr 33457

EAN 7316703457038

SM07



Nr 33273

EAN 7316703273072

JAW CUSHIONS



Nr 33381

EAN 7316703381104

ST11 HOLDFAST



Nr 33639

EAN 7316703639113

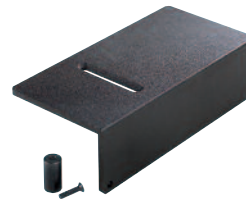
BENCH DOGS



Nr 33290 4-pack

EAN 7316703290345

UNIVERSAL ANVIL



Nr 33617

EAN 7316703617104

FILE CLAMP



Nr 33492

EAN 7316703492107



SJÖBERGS WORKBENCHES AB  
SE- 576 95 Stockaryd • Sweden  
Tel +46 (0)382-257 00  
office@sjobergs.se • sjobergs.se

